

# SPECTRO3-ANA-Scope:

## Changes due to software update from SPECTRO3-ANA-Scope V1.2 to V1.3

The text below summarises the changes that were made with the software update from **SPECTRO3 ANA V1.2 to V1.3**.

A software update from V1.x to V1.3 can be performed quite easily.

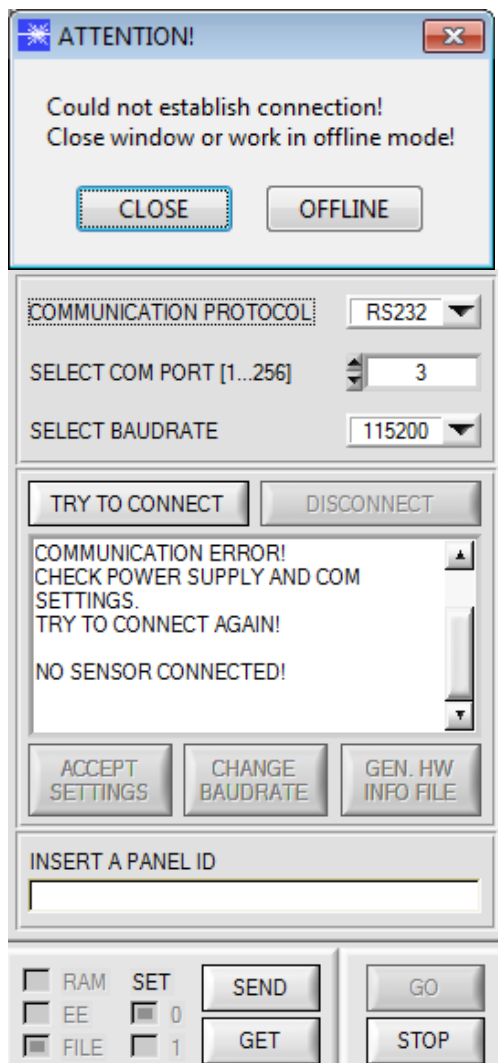
All you need is the FirmwareLoader V1.1 and the firmware files for version 1.3.

The FirmwareLoader V1.1 can be found on the CD that is provided with the sensor or can be downloaded from our homepage.

The firmware files are available from your sensor supplier.

The respective procedure is exactly described in the "[Manual FirmwareLoader V1\\_1](#)" file (see software CD/DVD: Folder Support Software → Version Update → FirmwareLoader V1.1).

### Change 1:

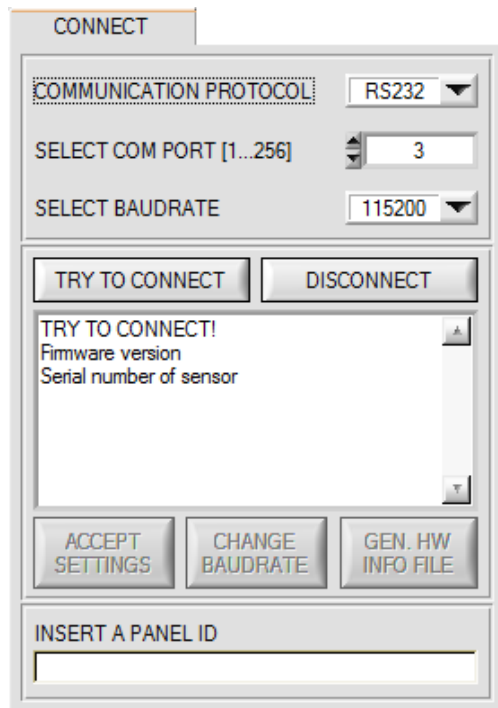


If a connection is not established automatically, e.g. if no sensor is connected, the software can be run in OFFLINE mode. In offline mode it is only possible to exchange parameters with a file on a storage medium, which often is helpful for the purpose of analysing parameter files.

If a sensor is connected and a connection still cannot be established, either the SCOPE version (program on the PC) and the firmware version (program in the sensor) do not match, or the interface to the sensor must be correctly configured.

If different Scope and firmware versions should be the problem, please get the Scope version that matches the firmware from your supplier.

## Change 2:



1. When a connection is established the serial number of the contacted sensor is transferred in addition to the firmware version.
2. The baudrates have been extended with 230400 and 460800.
3. **DISCONNECT** disconnects the connection between sensor and PC. The software then switches to OFFLINE mode, where it is only possible to exchange parameters with a file on a storage medium. The interface is then free for other programs (e.g. FirmwareLoader).

## Change 3:

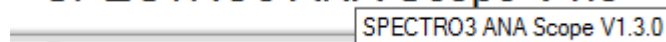
The format for the firmware and for the Scope version number has been changed.

The full version number now is a 3-character combination (a.b.c). Firmware and software can be run in combination if the first two characters (a.b) match. The third character c has been introduced to identify the remedying of possible software bugs.

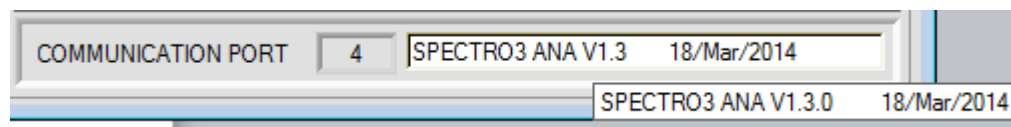
It is thus easy for the user to make sure he always uses the most recent version.

The full Scope version number is displayed after approx. 2 seconds when you move the mouse pointer on the Scope version.

### SPECTRO3 ANA Scope V1.3



The full firmware version number is displayed after approx. 2 seconds when you move the mouse pointer on the status line.



## Change 4:

The screenshot shows a software interface for sensor calibration. At the top, there are two status boxes: 'RED' with the value '3383' and 'GREEN' with the value '3064'. Below these are input fields for 'MAX DELTA OF RAY' (set to 500) and 'SETVALUE FOR R,G,B' (set to 3000), followed by a 'CALC CALIB FACTORS' button. Further down are three vertical sliders for 'CF\_RED', 'CF\_GREEN', and 'CF\_BLUE', each set to 1024, with a 'SEND CF' button below them. At the bottom are 'GET CF' and 'START SELF CALIBRATION' buttons. A callout bubble points to the 'RED' and 'GREEN' status boxes with the text: 'e.g. here: Double-click with the right mouse button.' To the right of the sliders are three vertical bars in red, green, and blue.

Accessing offset calibration now requires a double-click with the right mouse button exactly on the frame in the **CALIB** tab.

It is no longer sufficient to just click between e.g. RED and GREEN.

The 'PASSWORD PANEL' dialog box has a title bar with a close button. It contains a label 'ENTER PASSWORD' above a text input field. The input field contains the text 'ENTER PASSWORD' and a series of dots representing a password.

You will then prompted for a password.  
The password is: mellon

The offset calibration dialog box contains instructions: 'Make sure that the Receiver of the sensor is covered!', 'Push CALCULATE OFFSET to detect the offset.', and 'Push SEND OFFSET to update the sensor.' Below the instructions are three input fields: 'OFFSET R [ Default 3100 ]' with value '3081', 'OFFSET G [ Default 3100 ]' with value '3080', and 'OFFSET B [ Default 3100 ]' with value '3080'. At the bottom are three buttons: 'CALCULATE OFFSET', 'SEND OFFSET', and 'GET OFFSET', followed by a 'CLOSE' button.

This tab is now more clearly structured, but there are no other changes here.